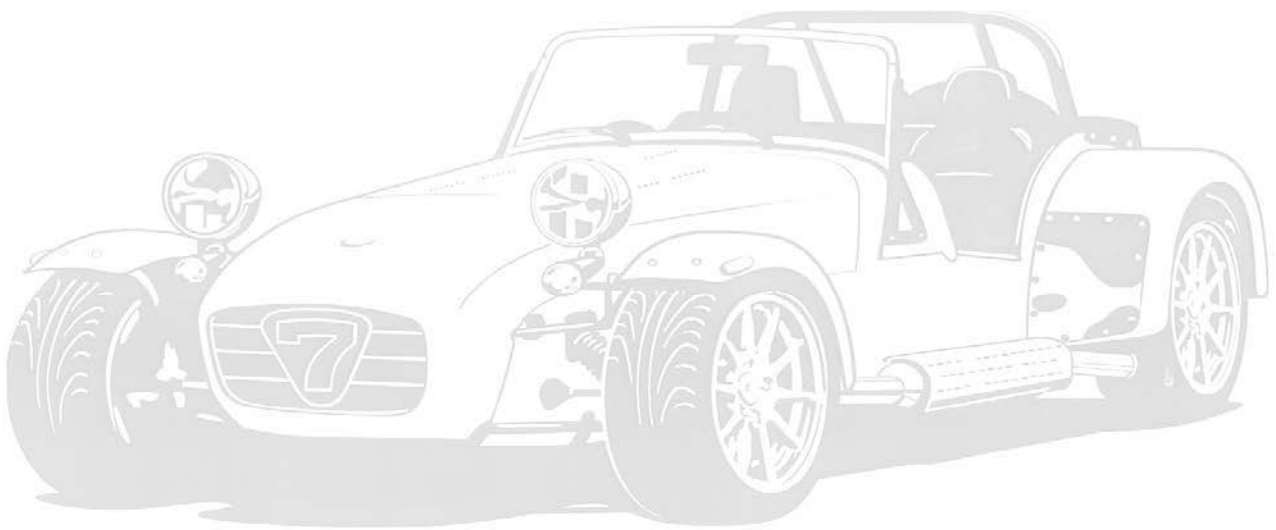


Individual Vehicle Approval Guide



Issue 1.1 January 2012



Individual Vehicle Approval Guide

In order to have the best possible chance of a successful (1st time) IVA pass, we recommend that you read this guide and follow the recommendations.

Whilst every effort is made to ensure our build book is current and accurate for assembly and IVA preparation, our constant improvements to the product and changing homologation requirements mean that this isn't always the case.

Though we can not guarantee a first time pass the following areas as detailed in this document should be checked to ensure conformity and to stand the best chance of a pass.

You have the option to either:

- 1) Present your car yourself for the IVA test, at a test centre of your choice

Whilst you are not permitted to 'work on the car' during the IVA test, it is advisable, when presenting for your own test, to take a basic tool kit, some spare cable ties and any spare rubber trim / caps you may have.

- 2) Use the presentation service of the factory service centre or Caterham Midlands service centre.

It should also be noted that if you use our presentation service we will drive the car to and from the test. This gives a good roadtest and allows time for the brake pads to bed in before the test.

In either case, completion of forms (Inc proof of address / Identity), payment of the test fee and booking of the test itself is the responsibility of the owner / customer.

Whilst every care is taken to protect paint we cannot be responsible for paint/stone chips.

Please note: The car must be fully filled with fuel for the IVA inspection.

We hope you find this guide to be helpful and please do not hesitate to contact us should you have any questions regarding its contents.

Good luck from the Caterham Service Team!

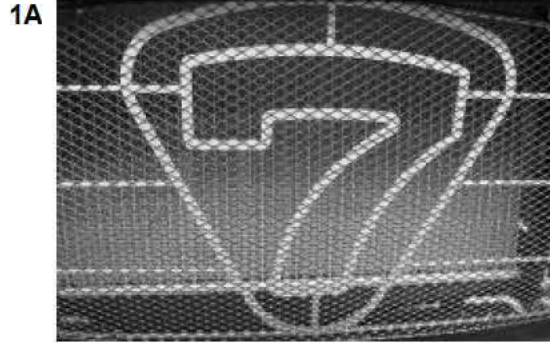


PRE IVA CHECK LIST

✓

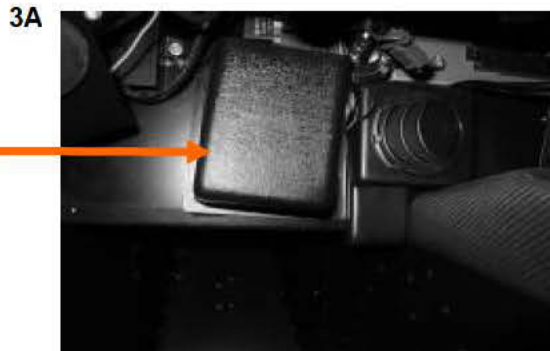
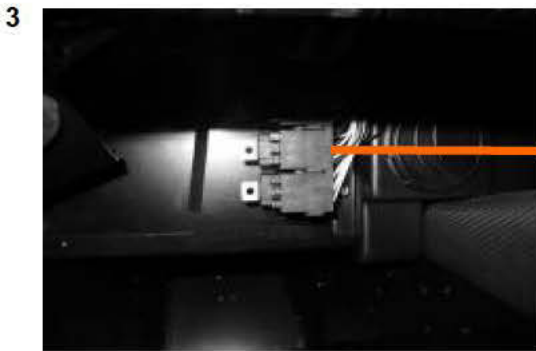
- 1 Check grille mesh is in front of 7 grille
- 2 Rotate spare wheel so weights are at the bottom of the wheel
- 3 Check fuse box cover is fitted (Not relevant to Sigma engined cars)
- 4 Check battery master switch key has cover fitted and eyebrow edge is covered with trim
- 5 Check rubber covers are fitted over track rod ends and lock nuts
- 6 Check plastic covers fitted to all front suspension bolt heads, bonnet catches and hooks. Also fit to exhaust mounting bolt heads and cage mounting bolt heads (if fitted)
- 7 Mirrors are to be mounted on the central stanchion fixing screw with the supplied brkts
- 8 Indicator mounting pod to be trimmed and must be all the way round **(Continuous and permanently fixed)**
- 9 No exterior holes in bodywork
- 10 Check fog and reverse light spacing wedges are fitted
- 11 Fire extinguisher pull handle must be removed before IVA (use bung to cover hole in dash)
- 12 Check knee trim panels fitted
- 13 Check harness bolts protrude through chassis rail
- 14 Check trim fitted to cycle wing edge (Continuous and permanently fixed)
- 15 Indicator / headlight wiring must be sheathed and a grommet fitted on the exits/entries of headlight stays/brkts
- 15A Ensure the wiring in sheathed and a grommet is fitted to the headlight stay
- 15B Ensure that the heat shrink is shrunk and a grommet is fitted to the wingstay
- 16 Front wishbone apertures to be trimmed (front and rear mount points)
- 17 Check fuel filler cover fitted and fuel cap is tethered
- 18 Check seat bolts come through nyloc nuts
- 19 Check scuttle edge trim fitted
- 20 Front wing leading edge must be over wheel
- 21 Fit bonnet catch cover Front/Rear
- 22 Bend exhaust springs down
- 23 Cover required on starter motor and alternator connection nut (positive feed)
- 24 Bonnet spring bolts radiused
- 25 Check fuel tank earth is fitted and is visible
- 26 Aim for 3 clicks on handbrake adjustment
- 27 Ensure that wires are secured at least every 300mm or installed in a secure hollow component e.g. conduit and then check to ensure that there are no pinch points, sharp edges etc that wires could rub against paying particular attention to areas where there is relative movement between components for example chassis to engine, differential to chassis.
- 28 Brake fluid indicator label must be fitted
- 29 Fit trim to exhaust cover where applicable
- 30 Ensure handbrake cable is free from any foul
- 31 Ensure rear light cluster wiring is fully insulated
- 32 Fit grommet to stop chaffing of the lighting wiring
- 33 Ensure that the nosecone doesn't foul the ARB
- 34 Academy Specific - Ensure passenger side mirror is mounted on the top stanchion (Due to cage being fit)
- 35 All cars: Requirement of 2 seats and 2 seat belts
- 36 Ensure the steering column can not foul the belt tensioner
- 37 Ensure the fuel hose is free from any foul
- 38 All types of dashboard: Fit edge trim to the corner of the passenger side dashboard
- 39 Carbon fibre dashboard only:Fit rubber edge trim to the underside edge of dashboard
- 40 Fit trim to passenger side upper bush steering column (vacant bush hole)
- 41 Fit grommet to the flat edge of the sidescreen hinges (stanchion hinges)
- 42 Ensure grommets are fitted to the knee trim panels

PRE IVA CHECK LIST PICTURES

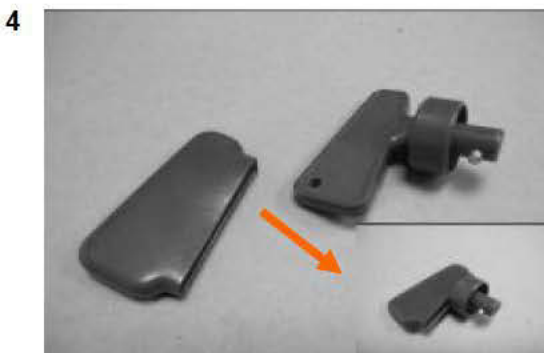


Step 1: Check grille mesh is in front of 7 grille

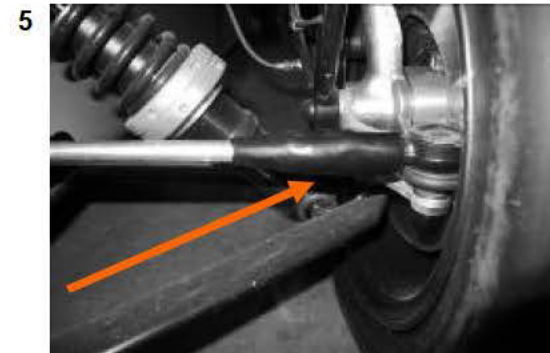
Step 2: Rotate spare wheel so weights are at the bottom of the wheels (No Picture)



Step 3: Check fuse box cover is fitted



Step 4: Check battery master switch key has cover fitted and eyebrow edge is covered with trim.



Step 5: Check rubber covers are fitted over track rod ends and lock nuts.

Note: End of cover will need to be cut off to fit over the track rod arm.

PRE IVA CHECK LIST PICTURES

6



Step 6: Check plastic covers fitted to all front suspension bolt heads, bonnet catches and hooks. Also fit to exhaust mounting bolt heads and cage mounting bolt heads (if fitted).

7



Step 7: Mirrors are to be mounted on the central stanchion fixing screw with the supplied brackets.

8



Step 8: Indicator mounting pod to be trimmed and must be all the way round.
(Continuous and permanently fixed)

Step 9: No exterior holes in bodywork (No Picture)

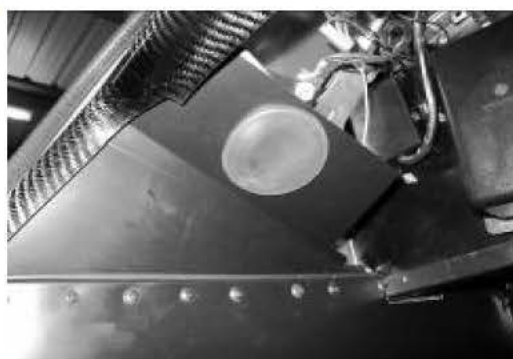
10



Step 10: Check fog and reverse light spacing wedges are fitted.

Step 11: Fire extinguisher pull handle must be removed before IVA (use bung to cover hole in dash).

12



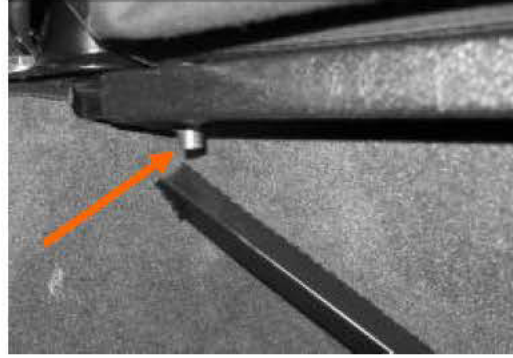
Step 12: Check knee trim panels fitted and rubber fitted to bottom edge of dash panel.

PRE IVA CHECK LIST PICTURES

12A

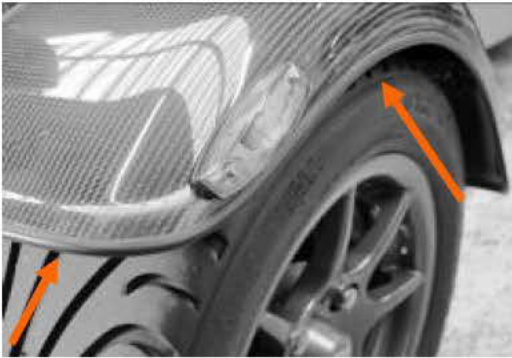


13



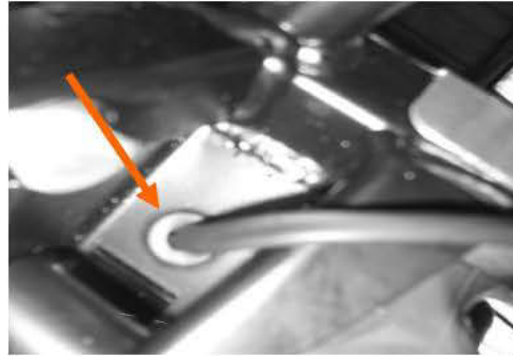
Step 13: Check harness bolts protrude through chassis rail.

14



Step 14: Check trim fitted to cycle wing edge
(Continuous and permanently fixed)

15



Headlight Wiring/Routing Picture 1

Step 15: Indicator/headlight wiring must be sheathed and a grommet fitted on the exit/entry of headlight stays/brackets.

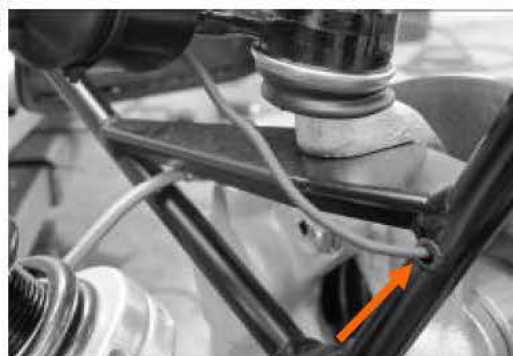
15A



Headlight Wiring/Routing Picture 2

Step 15A: Ensure the wiring is sheathed and a grommet is fitted to the headlight stay.

15B



Headlight Wiring/Routing Picture 3

Step 15B: Ensure that the heat shrink has been shrunk and a grommet is fitted to the wingstay.

Step 15/A/B: See Pictures

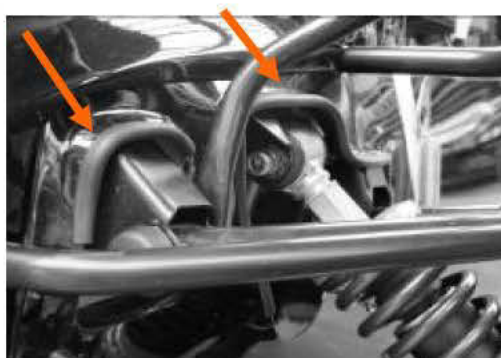
PRE IVA CHECK LIST PICTURES

15C



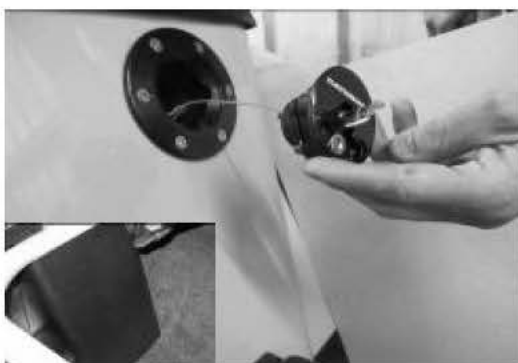
Headlight Wiring/Routing Picture 4

16



Step 16: Front wishbone apertures to be trimmed (front and rear mount points).

17



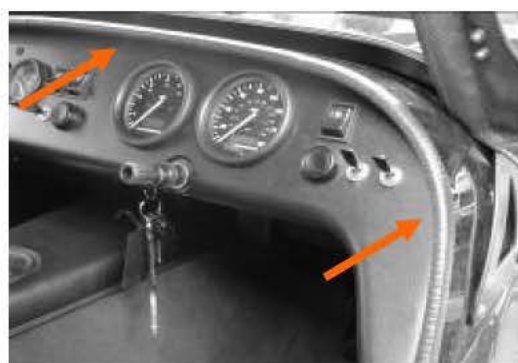
Step 17: Check fuel filler neck cover is fitted in boot area and fuel cap is teathered.

18



Step 18: Check seat bolts come through nyloc nuts.

19



Step 19: Check scuttle edge is trimmed.

20



Step 20: Front wing leading edge must be over wheel.

PRE IVA CHECK LIST PICTURES



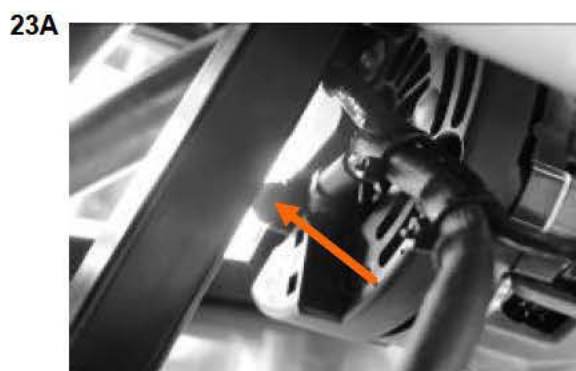
Step 21: Fit bonnet catch cover Front/Rear.



Step 22: Bend exhaust springs brackets down.



Step 23: Cover required on starter motor and alternator connection nut (positive feed).



Step 24: Bonnet spring bolts radiused.

PRE IVA CHECK LIST PICTURES

25



Step 25: Check fuel tank earth is fitted and is visible.

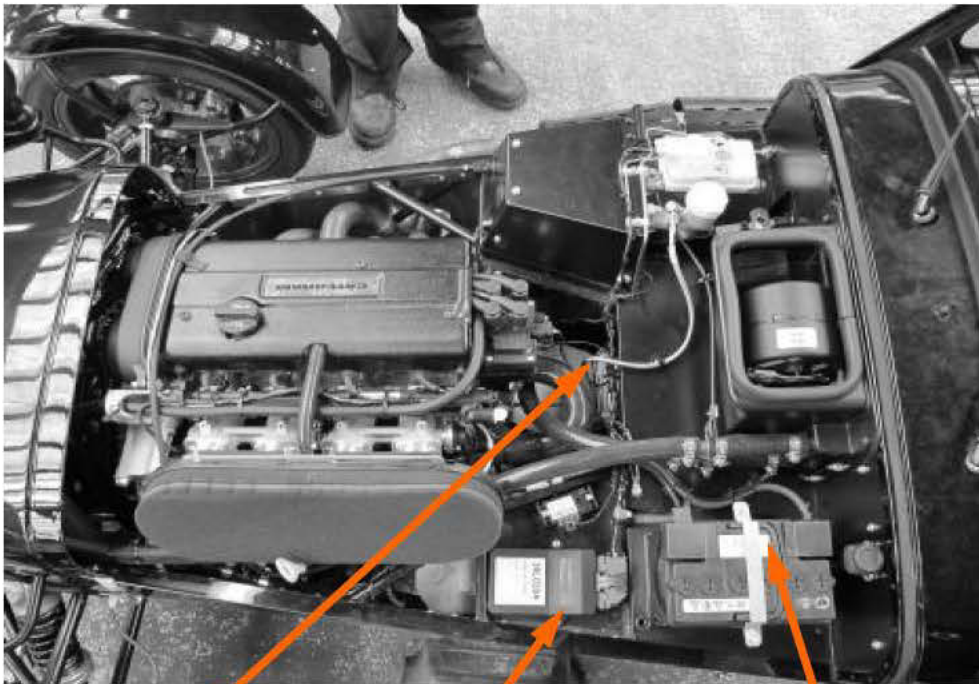
25B



Step 25: Located on inner fixing of rear wing.

Step 26: Arm for 3 clicks on handbrake adjustment (No Picture).

27



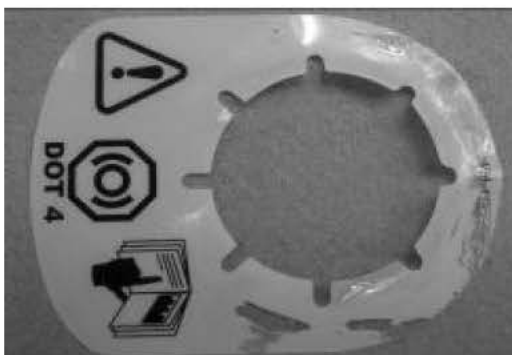
Step 27: Ensure that wires are secured at least every 300mm or installed in a secure hollow component e.g. conduit and then check to ensure that there are no pinch points, sharp edges etc that wires could rub against paying particular attention to areas where there is relative movement between components for example chassis to engine, differential to chassis.

PRE IVA CHECK LIST PICTURES

28

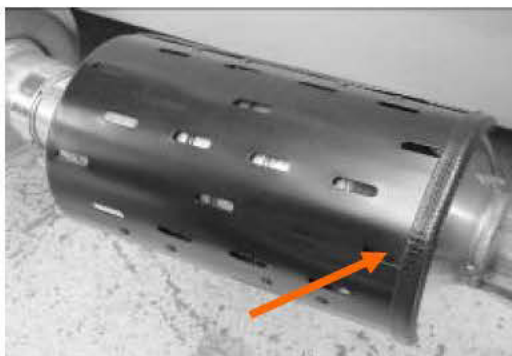


28A



Step 28: Brake fluid indicator label must be fitted.

29



Step 29: Fit trim to exhaust cover where applicable.

30

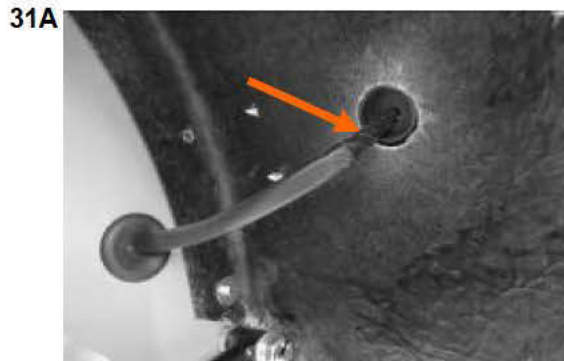
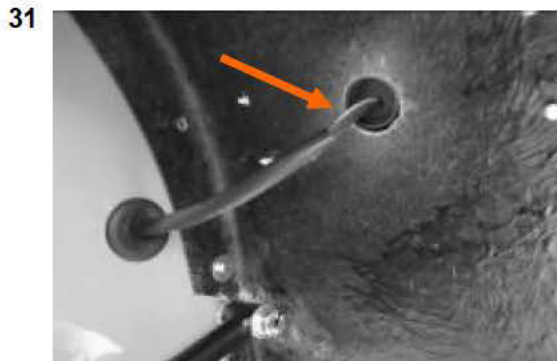


Step 30: Ensure handbrake cable is free from any foul.

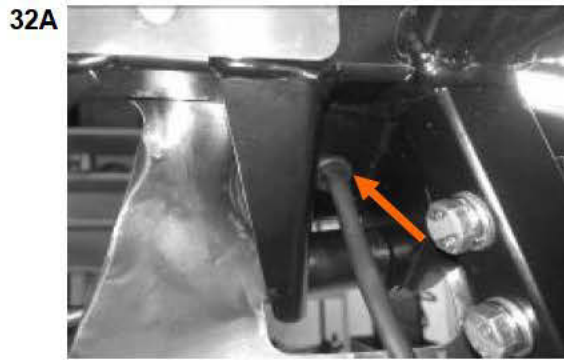
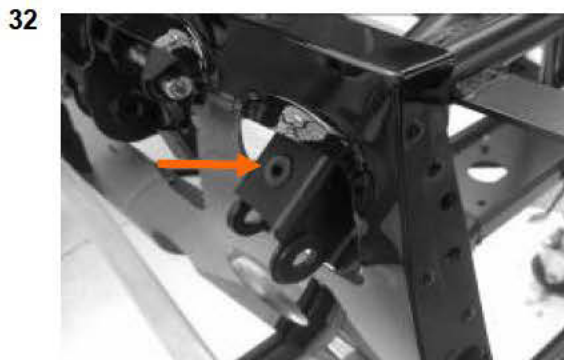
30B



PRE IVA CHECK LIST PICTURES



Step 31: Ensure rear light cluster wiring is fully insulated.



Step 32: Fit grommet to stop chaffing of the lighting wiring.



Step 33: Ensure that the nosecone doesn't foul the ARB.

PRE IVA CHECK LIST PICTURES

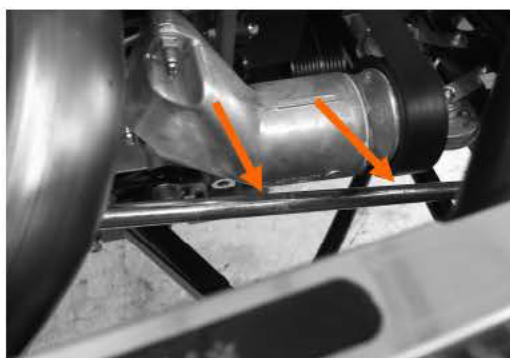
34



Step 34: Academy Specific - Ensure passenger side mirror is mounted on the top stanchion.
(Due to cage being fit).

Step 35: All cars: Requirement of 2 seats and 2 seat belts.

36



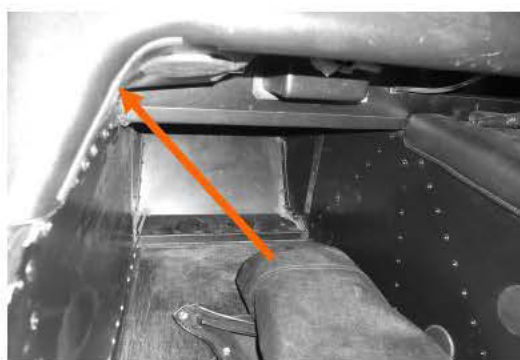
Step 36: Ensure the steering column can not foul the belt tensioner.

37



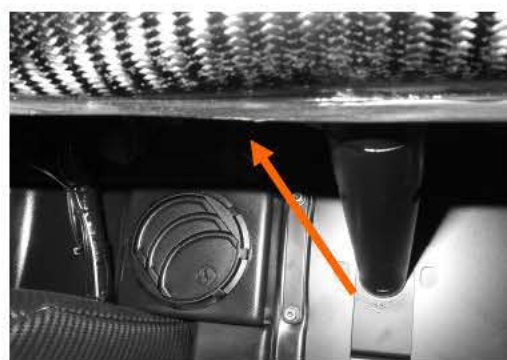
Step 37: Ensure the fuel hose is free from any foul.

38



Step 38: All type of dashboards:
Fit edge trim to the corner of the passenger side dashboard.

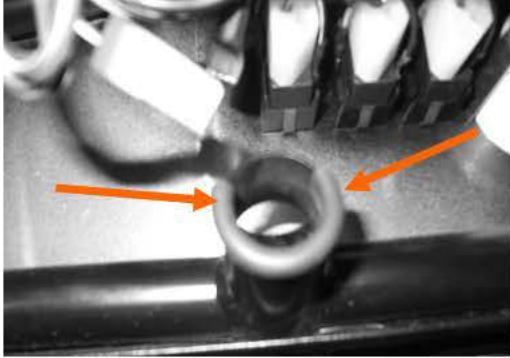
39



Step 39: Carbon fibre dashboard only:
Fit rubber edge to the underside edge of dashboard.

PRE IVA CHECK LIST PICTURES

40



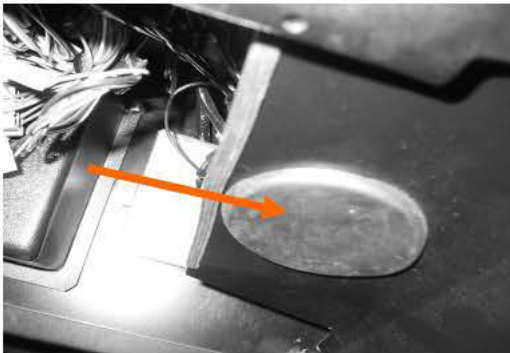
Step 40: Fit trim to passenger side upper bush steering column (vacant bush hole).

41



Step 41: Fit grommet to the flat edge of the sidescreen hinges (stachion hinges).

42

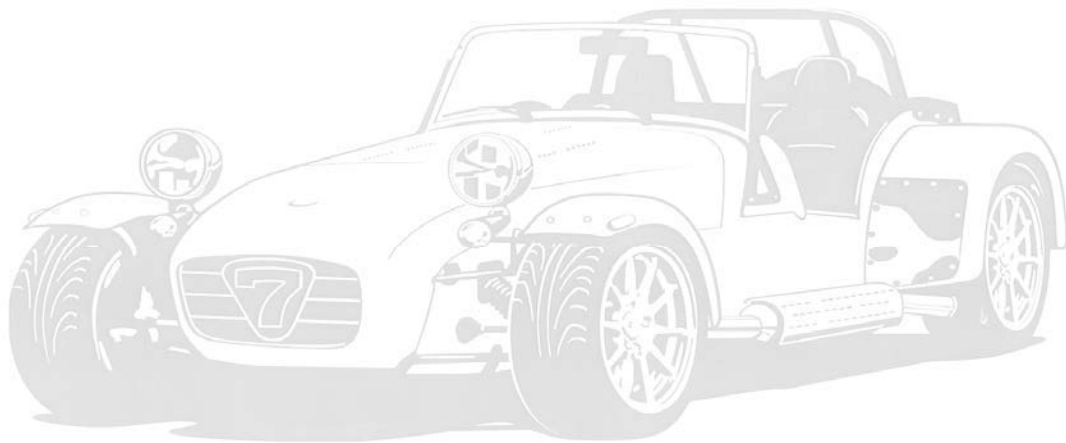


Step 42: Ensure grommets are fitted to the knee trim panels.

CATERHAM

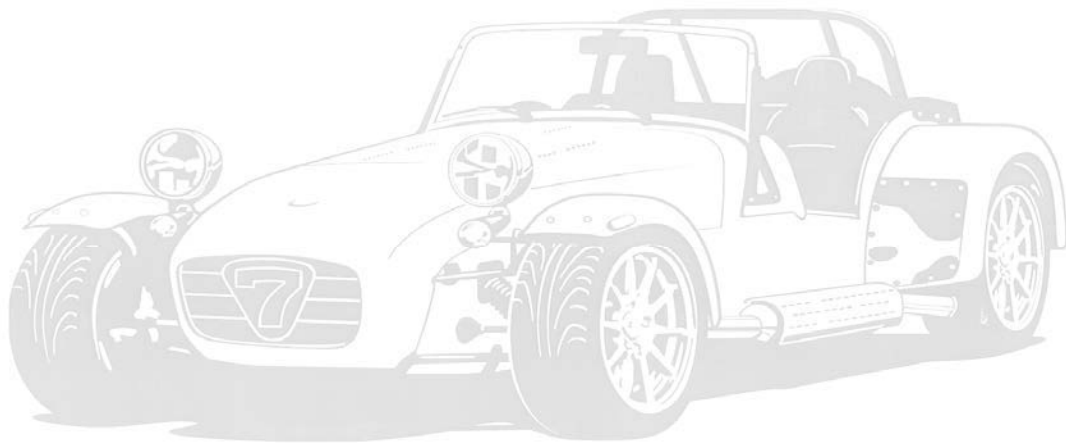
AFTERSALES

Notes:





Build Concerns to be assessed/rectified at Post
Build Check:



This can be given to the Aftersales team when you bring your car in for its post build check or alternatively scanned and emailed to aftersales@caterham.co.uk.